



Elgin Avenue, London, W9 2HD
£2,800



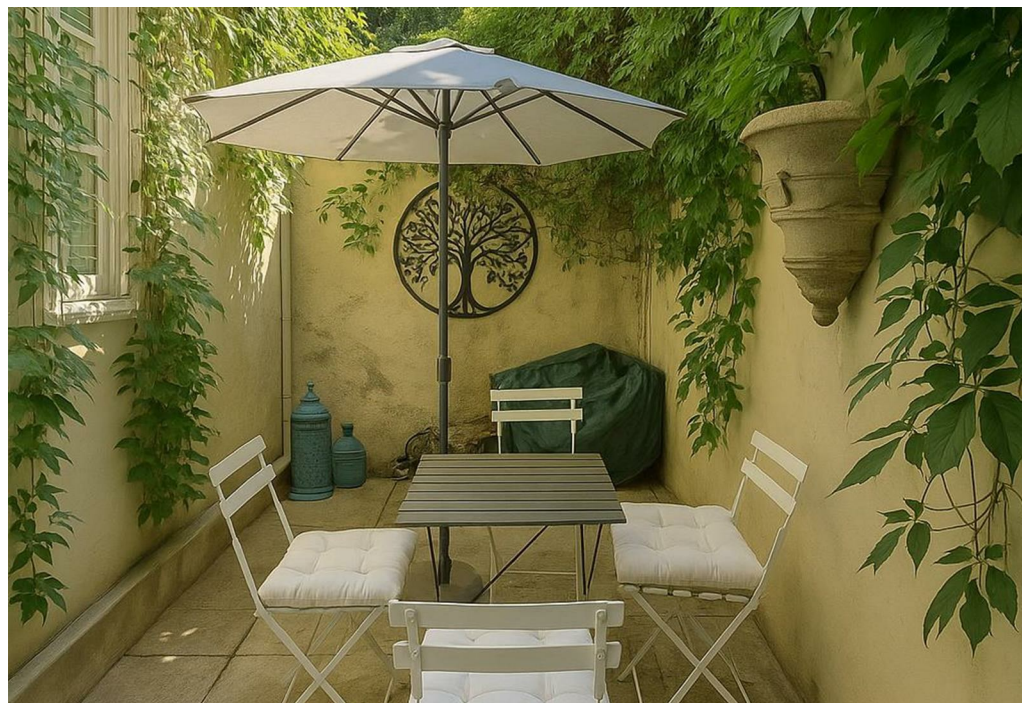


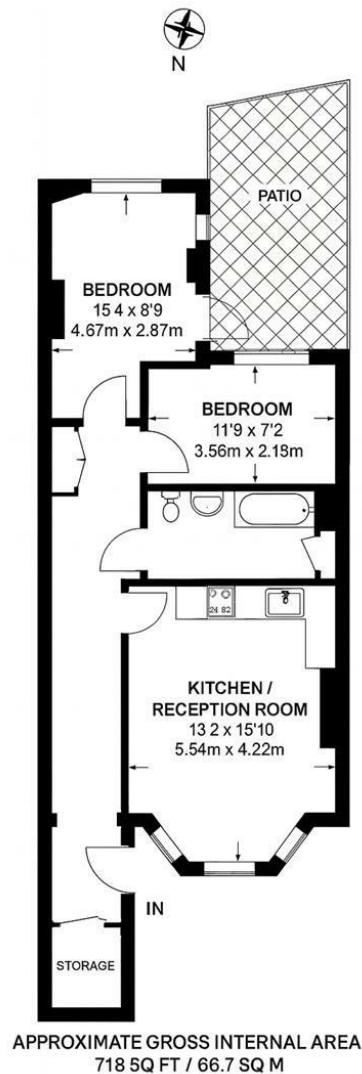
2 x  1 x  1 x 

Braithwait is pleased to present this bright two bedroom lower ground garden flat with high ceilings and its own private entrance, situated in a white stucco period terrace. The flat was recently renovated with wooden flooring, an open plan reception, modern kitchen and a spacious floor-to-ceiling tiled bathroom. The flat, ample storage and has two double bedrooms, with the main one opening onto a private south facing leafy patio.

Ideally located close to Maida Vale and Warwick Avenue tube stations as well as the picturesque canals of Little Venice with easy access to Paddington Station and the bars and cafes of Paddington Basin.

Potential to extend into a third bedroom. Long leasehold.





Important Notice Debussy Property Service Ltd trading as Braithwait for themselves and for the vendor of this property whose agents they are, give notice that (i) these particulars do not constitute any part of an offer or contract, (ii) all statements contained within these particulars are made without responsibility on the part of Braithwait or the vendor, (iii) whilst none in good faith, none of the statements contained within these particulars are to be relied upon as a statement of representation or fact, (iv) any intending purchaser must satisfy him/herself by inspection or otherwise as to the correctness of each of the statements contained within these particulars, (v) the vendor does not make or give either Braithwait or any person within their employment any authority to make or give any representation or warranty whatsoever in relation to this property. Wide angled lenses may be used in photographs.

Call us on 0207 289 8889 or email sales@braithwait.co.uk

B
BRAITHWAIT